

The perfect combination

UBIPACK  
GYN

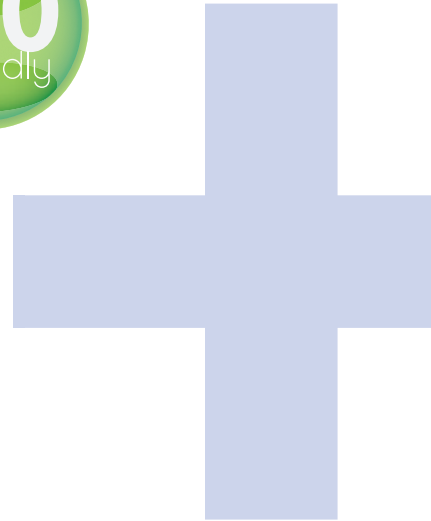


SOPRO  
COMEG

# UBIPAC

## UBICAM

USB camera for diagnosis aid



### Compatibility

Ubicam is compatible with all:

- Rigid endoscopes
- Flexible endoscopes
- Colposcopes\*

### Cutting-edge technology

The new iCe™ (Intelligent Control Endoscope) feature of the Ubicam by Sopro-Comeg optimizes all settings according to the endoscope in use.

This unique feature analyzes in real time:

- Size of the endoscope
- Color temperature
- Brightness



\* Equipped with a beamsplitter

## UBiled

**Powerful, ultra efficient and compact**

### **LED consulting light source**

UBILED is packed with features with a compact and attractive design:

- Light output is comparable to a 100 watts xenon lamp
- LED lifespan of 50 000 hours
- Reduced in heat emission
- Bright illumination under all conditions
- Color temperature optimizing color contrast
- User-friendly

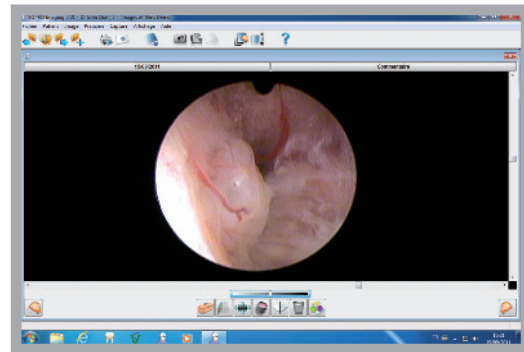




## Imaging software dedicated to diagnosis aid and patient management

Already hugely popular for many years for its ease of use and its multi-language format (25 languages), **sopro imaging** has been significantly improved with a sleek new view design and enhanced ergonomics.

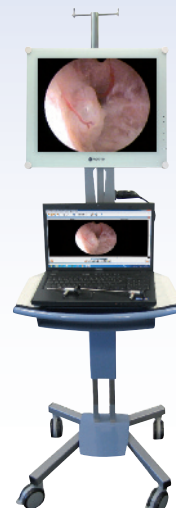
Whatever your requirements, **sopro imaging** is the solution for streamlining your daily practice.



### Many tools accessible

- Capture of color frames or live video sequences
- Printing of medical reports
- Patient management
- Addition of comments
- Export or mailing of images and video sequences

Designed for Ubipack, the Ubicart will fit any environment



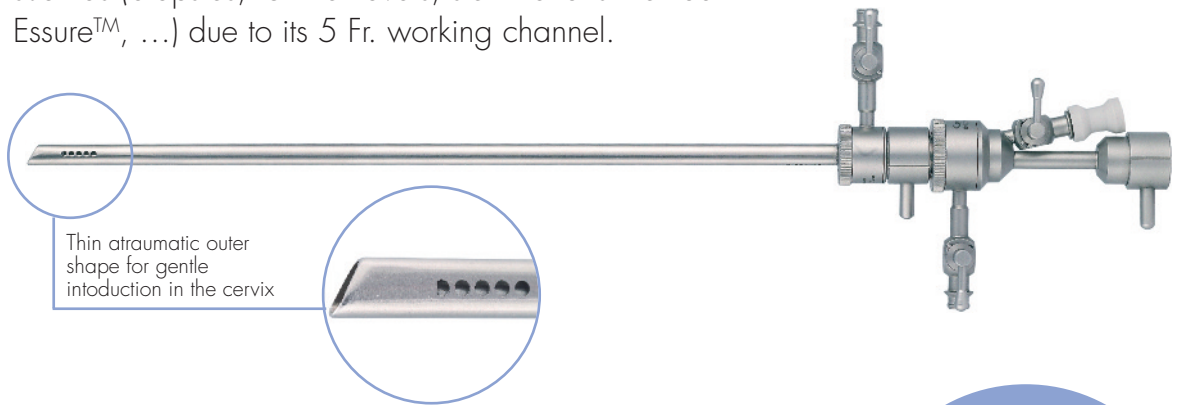
## Hysteroscope

The hysteroscope 30°, ø 2,7 mm, length 300 mm, autoclavable (tested up to 500 cycles) with rod lens optical system.



## Operative sheath

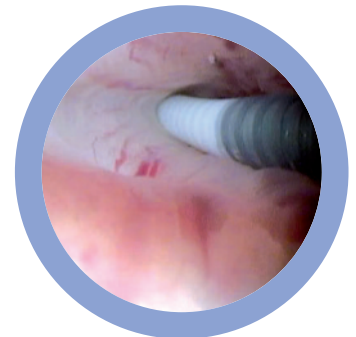
The 14.9 Fr. continuous flow sheath with two rotatable stopcocks allows all hysteroscopic procedures such as (biopsies, IUD removals, sterilizations method Essure™, ...) due to its 5 Fr. working channel.



Thin atraumatic outer shape for gentle introduction in the cervix

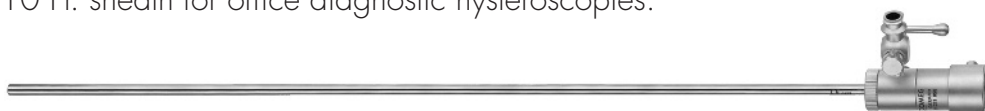


# or



## Diagnostic sheath

The 10 Fr. sheath for office diagnostic hysteroscopies.



# UBIPACK

## GYN

Includes the following devices:



- Sensor: CCD 1/4" high sensitivity
- Resolution: (752 x 582) PAL – (768 x 494) NTSC
- Definition: 470 lines
- Sensitivity : 2 lux
- White balance with **iCe** feature
- Video enhancement
- Electronic anti-moiré filter for flexible fiberscope
- Automatic saving of the adjustments parameters
- 2 control buttons
- Cable length : 3 meters, Ø:5 mm
- 1 USB 2.0 output
- Waterproof camera head
- C-Mount
- Size of the sensor : L = 87mm; Ø = 30 mm
- Weight of the sensor : 210g
- Power supply : 5 V DC
- Power consumption : 2.5 VA

|    |                  |              |
|----|------------------|--------------|
|    | CAMERA<br>UBICAM | 1 CCD CAMERA |
| ON | 1 W              | 25 W         |

Power consumption between UBICAM and a standard 1 CCD camera



- LED technology
- Nominal power: 30 W (light intensity of a 100W xenon light source)
- Color temperature: > 4500° K
- LED lifetime: 50.000 hours
- Stand-by mode with light intensity memory
- Electronic iris
- Anti-blooming system with light cable detection
- Automatic over temperature protection
- Adjustment of the light intensity
- Size: D: 180mm; W: 95mm; H: 35mm
- Weight: 320 g
- Power consumption: 30 VA
- Input voltage: 115V or 230 V~ / 50 or 60 Hz
- Light cable with Storz/Storz connector included  
L : 2,5m ; Ø : 4,8mm

|    |                        |                       |
|----|------------------------|-----------------------|
|    | UBILED<br>LIGHT SOURCE | XENON<br>LIGHT SOURCE |
| ON | 41 W                   | 150 W                 |

Power consumption between the LED and the Xenon light source

## Operative hysteroscopy set

- Ref : 191 273 202 – 14.9 Fr. Continuous flow operative hysteroscopy sheath; working length : 220mm ; 2 rotatable stopcocks/360°
- Ref : 163 282 992 - Forward oblique hysteroscope 30°; Ø : 2.7mm ; length : 301mm ; autoclavable

or

## Diagnostic hysteroscopy set

- Ref : 191 273 052 – 10.5 Fr. Diagnostic hysteroscopy sheath; 30°; 1 rotatable stopcock
- Ref : 163 282 992 - Forward oblique hysteroscope 30°; Ø : 2.7mm ; length : 301mm ; autoclavable

sopro  
imaging

### Recommended computer configuration

Operating system : Windows 7

Processor Intel Core2

RAM : 2 Gb

Hard disk : 250 Gb

USB ports : 2 USB 2.0 Hi-Speed ports

Graphics Card with NVIDIA or ATI chipset /512 MB of unshared video RAM with support for DirectX 9 or higher

USB chipset : Intel or NEC

Screen Resolution : 1280 x 1024 or higher

The Computer must comply with IEC60950 or IEC 60601-1

SOPRO  
COMEG

